

- ① NED R. McWERTER HIGHWAY BRIDGE
- Ⓐ SHAMROCK DOCK
- Ⓑ COAST GUARD BASE
- Ⓒ PARIS LANDING STATE PARK

NOTE:  
Piling Marking Wildlife  
Refuge Boundary

Red Bank Light  
and Daymark 64.4  
FL W 4s NG(U), NG(D)

Standing Rock Light  
and Daymark 67.9  
FL W 4s SG(U) SG(D)

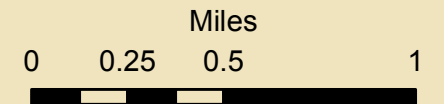
FEDERAL  
MOORING  
CELLS (2)

Big Sandy  
Drop Zone

N36°25'36"  
W88°04'04"

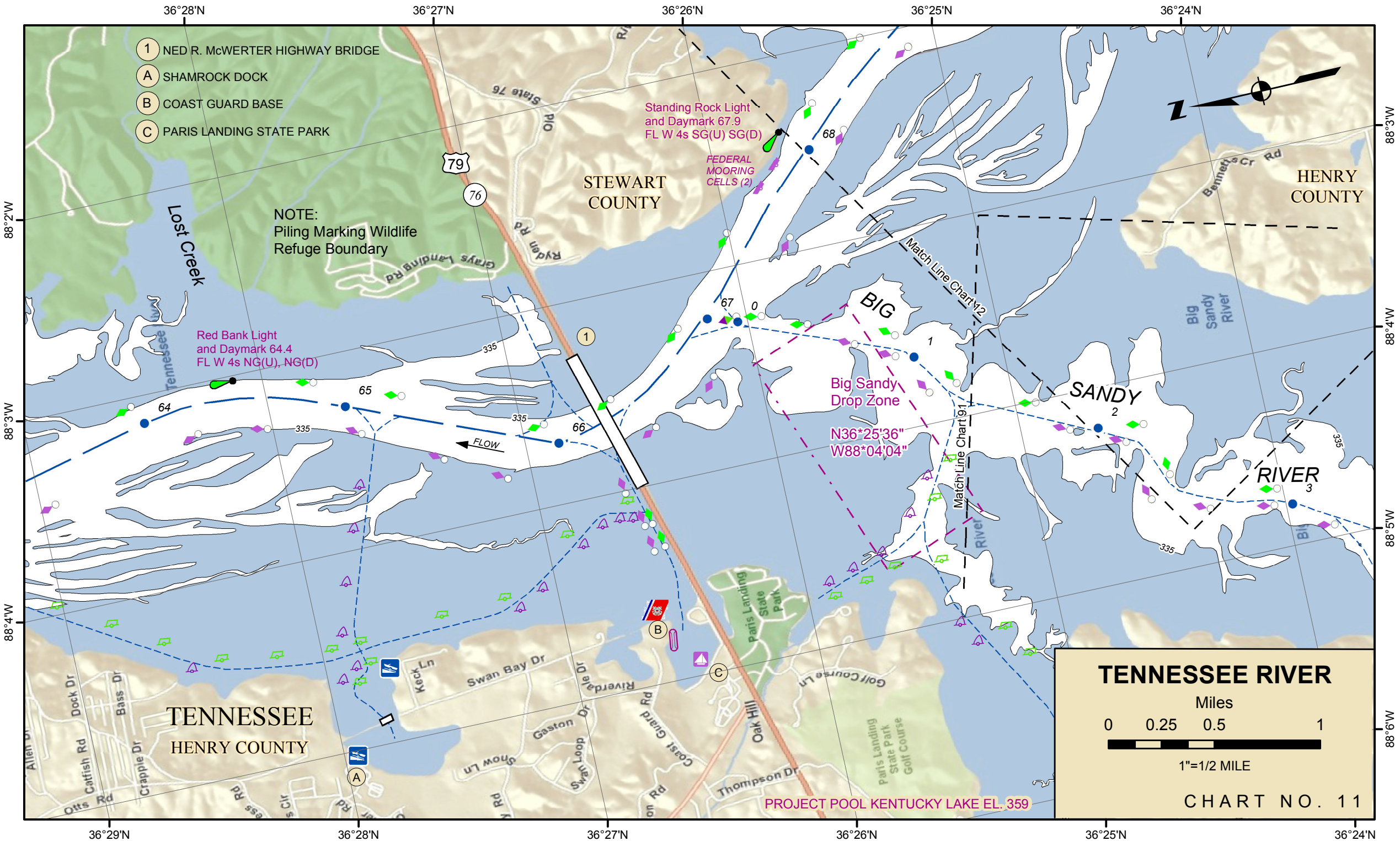
PROJECT POOL KENTUCKY LAKE EL. 359

### TENNESSEE RIVER

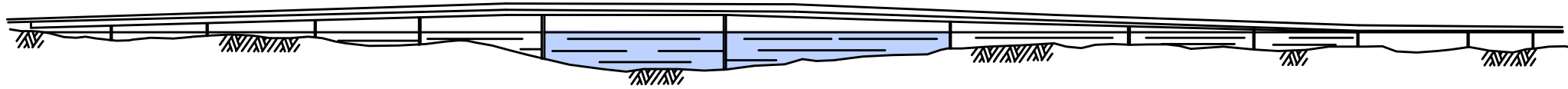


1"=1/2 MILE

CHART NO. 11



CHANNEL SPANS  
MILE 66.3



①

GOVERNOR NED R. McWHERTER HIGHWAY BRIDGE (U.S. HWY 79)  
CHANNEL SPANS

	<u>SPANS</u>	
	<u>LEFT</u>	<u>RIGHT</u>
ELEVATION OF LOW STEEL	471.0	471.0
VERTICAL CLEARANCE AT POOL STAGE	58.0'	58.0'
VERTICAL CLEARANCE AT REGULATED H. W.	42.0'	42.0'
HORIZONTAL CLEARANCE	400.0'	400.0'
ELEVATION OF STEEL CENTERLINE OF SPAN	423.0'	423.0'