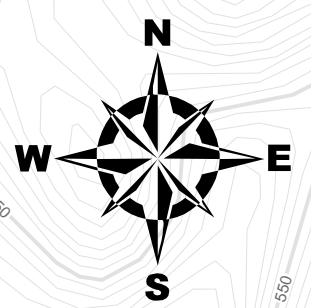


88°6'30"W 88°6'0"W 88°5'30"W 88°5'0"W 88°4'30"W 88°4'0"W

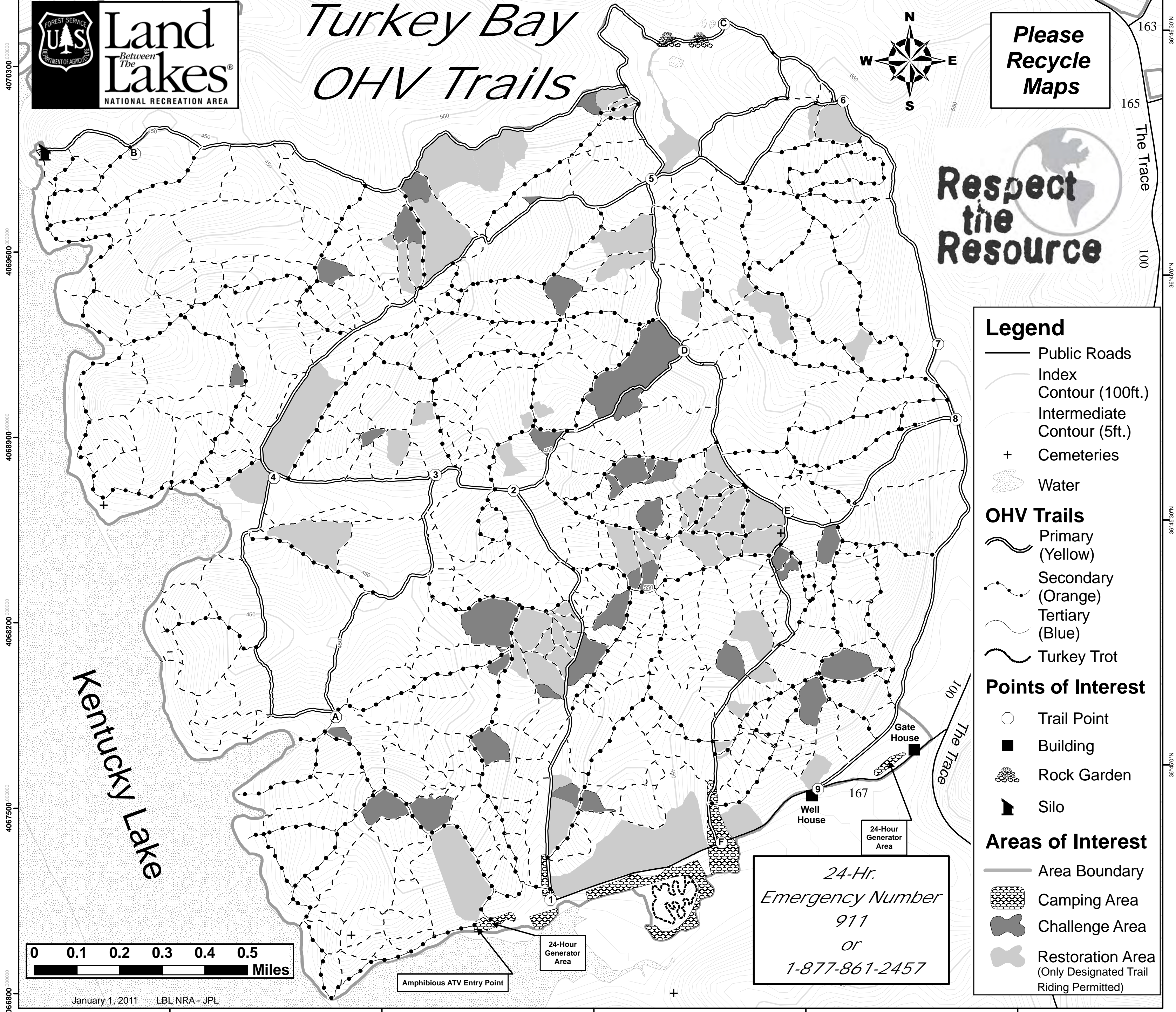


# Turkey Bay OHV Trails

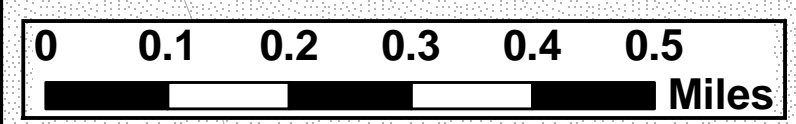
**Please  
Recycle  
Maps**



**Respect  
the  
Resource**



- Legend**
- Public Roads
  - Index Contour (100ft.)
  - Intermediate Contour (5ft.)
  - Cemeteries
  - Water
- OHV Trails**
- Primary (Yellow)
  - Secondary (Orange)
  - Tertiary (Blue)
  - Turkey Trot
- Points of Interest**
- Trail Point
  - Building
  - Rock Garden
  - Silo
- Areas of Interest**
- Area Boundary
  - Camping Area
  - Challenge Area
  - Restoration Area (Only Designated Trail Riding Permitted)



*24-Hr.  
Emergency Number  
911  
or  
1-877-861-2457*

Amphibious ATV Entry Point

24-Hour Generator Area

24-Hour Generator Area

Kentucky Lake

January 1, 2011 LBL NRA - JPL

401600 402400 403200 404000 404800

4070300 4069600 4068900 4068200 4067500 4066800

163 165 The Trace 100 36°46'30"N 36°46'00"N 36°45'30"N 36°45'00"N

# Turkey Bay Off-Highway Vehicle Area

at  
*Land Between The Lakes*<sup>®</sup>  
Located on beautiful  
Kentucky Lake.  
Open year-round.

Speed Limit: 15 mph on  
entrance road; 10 mph in  
camping and unloading areas.

## “Call Before You Haul”

For information regarding inclement weather closures and holiday camping closures, please call 270-924-2000 and press “3” for updated information. Closures are also posted on our website at [www.lbl.org](http://www.lbl.org) under Alerts & Notices.

For more information visit our website at [www.lbl.org](http://www.lbl.org) or call 1-800-LBL-7077 or 270-924-2000.

**Emergency Numbers**  
FS Law Enforcement  
911 or 1-877-861-2457

To be added to Turkey Bay's electronic newsletter mailing list, email [lblinfo@fs.fed.us](mailto:lblinfo@fs.fed.us).

Volunteer Opportunities  
Friends of LBL  
Volunteer Coordinator  
270-924-2007  
[www.friendsofbl.org](http://www.friendsofbl.org)

Revised 1-2011

The U.S. Department of Agriculture (USDA) prohibits discrimination in all its programs and activities on the basis of race, color, national origin, age, disability, and where applicable, sex, marital status, familial status, parental status, religion, sexual orientation, genetic information, political beliefs, reprisal, or because all or a part of an individual's income is derived from any public assistance program. (Not all prohibited bases apply to all programs.) Persons with disabilities who require alternative means for communication of program information (Braille, large print, audiotape, etc.) should contact USDA's TARGET Center at 202-720-2600 (voice and TDD).

To file a complaint of discrimination, write USDA, Director, Office of Civil Rights, 1400 Independence Avenue, SW, Washington, DC 20250-9410 or call 800-795-3272 (voice) or 202-720-6382 (TDD). USDA is an equal opportunity provider and employer.



United States  
Department of  
Agriculture  
Forest Service  
Southern Region



## ABOUT TURKEY BAY OHV AREA



Turkey Bay Off-Highway Vehicle (OHV) Area is a designated area for OHV riding and camping. Turkey Bay is centrally located in LBL and offers a variety of topography and trails for everyone. The area consists of about 100 miles of primary, secondary, and tertiary trails for many different levels of OHV riding. Camping areas, chemical toilets, and drinking water are available.

## FOR YOUR SAFETY

**You are responsible for your own safety. Trail use has inherent risks and you may encounter a variety of unexpected and/or dangerous conditions. It is your responsibility to be informed and take precautions. Trail conditions are subject to change without notice.**

### 1. Ride at your own risk. Know your limits.

- OHV riders should follow safety practices recommended by the AMA ASI, including wearing heavy shoes, protective clothing, shatterproof eyewear, and helmets.
- Use caution while unloading and while riding in camping areas.
- Trails are two-way traffic. For safety, drive with headlights on.
- See bulletin boards for additional information and emergency procedures.
- Hunting and other activities also occur in the OHV area. Be aware of and courteous to other users on and off the trail at all times.

**By signing the waiver, the registrant agrees to obey all rules and regulations posted at Turkey Bay OHV Area and printed in LBL literature. The permit holder is responsible for all use of the registered vehicle, ensuring it is operated in a safe and prudent manner at all times.**

## RULES AND REGULATIONS

**Restoration areas are closed to riding at all times. These areas are present to ensure future riding is possible.**

- Riding passengers on OHVs not designed to carry passengers is prohibited. (36 CFR 261.55b)
- Passengers are allowed in vehicles built by the manufacturer to carry passengers and/or the vehicle must have an enclosed metal cab or roll bar protection and seatbelts.
- Golf carts may serve as an additional means of transportation for individuals displaying an official state-issued accessible window tag or license plate. Only the individual issued the tag is permitted to operate the golf cart unless a physical impairment does not allow.
- All users are required to wear DOT-approved motorcycle safety helmets while vehicles are in operation, except in vehicles with a fully enclosed metal cab or roll bar protection and seatbelts.
- Stay on designated trails. If a trail is not signed, it is not a legal trail.**
- No person under age 16 may operate an ATV with an engine size exceeding 90cc displacement, and no person under age 12 may operate an ATV with an engine size exceeding 70cc displacement. (KY State Law 189.515)
- Direct parental or adult supervision is required for all persons under the age of 16 years operating an OHV. (KY Revised Statute 189.515)
- Anyone under 18 years of age must have a parent or legal guardian's signature to ride.
- Operating a vehicle in a manner that damages, mutilates, or removes any natural feature or other property is prohibited (36 CFR 261.9 a and b). This includes mudding, mud bogging, or creation of new trails.**

10. OHVs are to be operated from sunrise to sunset only. Legal riding hours are posted at the gatehouse daily.

11. Users must remain within the boundaries of Turkey Bay OHV Area. The lakeside boundary fluctuates with summer and winter pool lake levels. The waters edge serves as the western boundary of Turkey Bay. Only “street legal” OHVs (as defined by KY statutes) may be operated on LBL roads outside Turkey Bay and then on LBL numbered roads only. For more information on legal roads, see LBL's Motor Vehicle Use Map (MVUM).

12. Operators/passengers of motorized vehicles, except motorcycles, ATVs, and six wheelers, must use a fastened seatbelt while the vehicle is in use.

13. All OHVs must be registered with LBL before being used in Turkey Bay OHV Area. The permit sticker must be properly displayed on the registered vehicle at all times. When the gatehouse is staffed, permits may be obtained there. When the gatehouse is not staffed, riders must obtain a permit from the Golden Pond Visitor Center open daily from 9 a.m. to 5 p.m. or at North and South Welcome Stations, open March - November from 9 a.m. to 5 p.m.

14. A 15 mph speed limit will be enforced on the entrance road and a 10 mph speed limit for camping and unloading areas. Please use these areas for their designated use. No exhibition riding will be permitted.

15. All vehicles and operators must be in compliance with all state and federal laws.

16. OHVs must have properly functioning spark arresters and mufflers. Noncompliance will result in removal of permit.

17. LBL is neither liable nor responsible for damage, loss, or theft of personal property or for injuries to visitors.



18. Litter laws are strictly enforced throughout LBL. Users are expected to use trash receptacles or remove any trash they bring in. Trash bags are available upon request at the gatehouse.

19. All users must enter and exit Turkey Bay by way of Road 167 off The Trace. All other accesses are prohibited. Also, see Personal Water Craft and Amphibious ATV Launch information.

20. **Kentucky state law prohibits the public consumption of alcohol.**

## ROUTE MARKERS

### Primary Trails (Yellow Blaze)

Maintained trails that offer novice riders pleasant, less-challenging riding opportunities.

### Secondary Trails (Orange Blaze)

Narrower and more challenging trails serving as connectors between primary trails.

### Tertiary Trails (Blue Blaze)

The narrowest and most challenging trails serving as connectors between both primary and secondary trails.

### Challenge Areas (Red Rings)

These are typically 2-10 acres of steep, washed out hill climbs and are also the most difficult in the trails system. Although trails within these areas will not be signed, please utilize trails already disturbed, and don't disturb new ground. Challenge area boundaries are marked by red rings on the trees.

## RESPONSIBLE RIDING = FUTURE RIDING

- Place litter in trash receptacles. In remote areas, the policy is “Pack it in. Pack it out.”
- OHV travel off trails is strictly prohibited.** Vehicles are limited to size appropriate trails. Vehicles may only travel on trails wider than the vehicle wheel base.
- Please dispose of oil and hazardous chemicals properly.
- Some areas within Turkey Bay are being restored. Please do not ride in these areas.

## YOUTH TRAIL

**Turkey Trot**, a 1/2 mile kids' riding/learning trail, was constructed in the flat, wooded area near May's Cemetery. The entire area is fenced off and incorporates many fundamental obstacles for beginning riders (small rocks/logs, sharp turns, uphill/downhill/sidehill challenges, and whoop-dee-doo's), providing children an avenue to learn trail riding basics to become more confident on their machine.

## Turkey Trot Rules and Regulations

- Only ATVs and dirt bikes 90cc OR LESS are allowed on the trail. No go-carts.
- Only riders 16 years or under are allowed.
- Parents or legal guardians are encouraged to walk the trail to assist riders. Direct supervision is mandatory at all times.
- Helmets must be worn at all times. Other safety gear is recommended (gloves, boots, eye protection, body armor, etc.).
- Trail traffic is ONE WAY. Stay on the marked trail and follow the arrows.
- All riders should familiarize themselves with their machine. NO SURPRISES!
- Obey 10 mph speed limit. This trail is not a race track.
- A Turkey Bay riding permit is required for all vehicles.
- LBL Law Enforcement or Turkey Bay staff reserves the right to remove any rider from the trail if misuse or inappropriate riding behavior occurs.
- Camping is prohibited in the kids' riding area.



### Keep It Safe

- Wear proper safety gear.
- Maintain a safe speed.
- Stay alert. Expect the unexpected.
- No passengers on single-rider vehicles.

### Keep It Legal

- Stay on signed trails. Keep a current map.
- Know required equipment for your vehicle.
- Verify what trails are open and closed.
- Don't mix drug and/or alcohol with riding.

### Keep On Trails

- Travel only on designated routes.
- Maps are available for your use.
- Resist the urge - mud bogging and the creation of new trails is prohibited.
- Obey signs and temporary postings.

### Keep The Privilege

- Respect the environment - Tread Lightly!®
- Be courteous to all other trail users.
- Join a club and support Turkey Bay OHV Area.
- Encourage others to “Ride 4 Keeps.”

## CAMPSITE GUIDELINES

During your stay with us, please help provide a safe, quality experience for all our visitors.

- Fires are only allowed at campsites and must be attended at all times. Extinguish campfires before departure.
- Please maintain a clean campsite.
- Quiet hours are from 11 p.m. to 6 a.m. No generators during these hours, except in the 24-hour generator areas.
- Avoid excessive riding in or near campsites.
- Campsites are available on a first-come, first-served basis. Saving camping spots and roping off areas is not permitted.
- Regulations for Backcountry Camping Areas apply. Camping units may not be left unattended for more than a 24-hour period without permission. (36 CFR 261.16)
- All camping must be in the designated Turkey Bay OHV Camping Area.
- An honor fee system is located next to the gatehouse for after hours camping registration.

## CAMPING FEES, PERMIT FEES, & OTHER SERVICES

**Camping:** \$8 per night primitive  
Multiple night discount available.

**Annual Permit:** \$60  
Valid April 1 of year purchased to March 31 of following year. Available March 1.

**7-Day Permit:** \$30  
Valid for seven consecutive days after date of purchase.

**1- to 3- Day Permit:** \$15  
Valid for three consecutive days after date of purchase.

All permits are non-transferable.

Ice is available for purchase at the gatehouse.

## PERSONAL WATER CRAFT AND AMPHIBIOUS ATV LAUNCH

There is only one legal point of entrance and exit for personal water craft and amphibious ATVs at LBL in Turkey Bay OHV Area. This point is depicted on the Turkey Bay OHV Trail Map. Only ATVs made by the manufacturer to be operated as an amphibious ATV may enter the water. All users of this landing are required to register their OHV at the Turkey Bay Gatehouse via Road 167 immediately upon arriving at Turkey Bay.

**All Rules and Regulations apply to amphibious ATVs when operated in Turkey Bay OHV Area. The lakeside boundary fluctuates with the summer and winter pool lake levels. The waters edge serves as the western boundary to Turkey Bay. To enter or exit land and water, you must go back to the designated launch.**



All LBL designated roads where public motor vehicle use is authorized are identified on the Motor Vehicle Use Map (MVUM). Visitors should refer to MVUM for authorized motor vehicle routes. For more information about MVUM, visit [www.lbl.org](http://www.lbl.org).